



VASTPAVERS.COM

Caltrans

Location:

Caltrans District 11 Office
San Diego, CA

Contractor:

Claddagh Paving
Fallbrook, CA

Project:

Flat Roof Patio
600 Sq Ft

Solution:

VAST Composite
Landscape Pavers

Completed:

2009



CALIFORNIA DEPARTMENT OF
TRANSPORTATION



Phone: (612) 234-8958

E-mail: sales@vastpavers.com

Web: vastpavers.com



VAST Enterprises, LLC
1828 Marshall St. NE Suite 15A
Minneapolis, MN 55418

Claddagh Paving Relies on VAST to Fix Flat Roof Problem

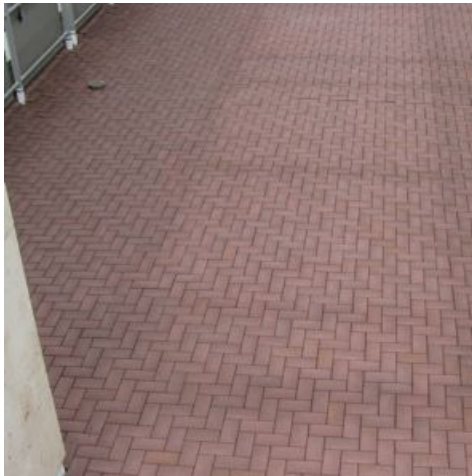
Caltrans (the California Department of Transportation) had a problem at its District 11 office complex in San Diego. The third floor of Building #1 was constructed with a poured concrete patio, which had cracked and was leaking down onto the second floor.

Claddagh Paving is Southern California's premier contractor for paver installations in commercial, institutional, government and residential projects. Claddagh Paving offers VAST Composite Pavers as its preferred paver product, especially for green

building and sustainable development projects. Claddagh recommended VAST to Clark Construction, the general contractor, and Caltrans.

"VAST Composite Pavers matched the look and color of the pavers in the building's parking area. The fact that it's a green product — and a green product that was budget-neutral — was a bonus," Aaron Baker, Chief Engineer, Caltrans.

The grids were placed directly on top of the existing concrete, using no sand due to the level nature of the existing concrete and the



Impressive Results...on Budget

"It did not cost more to go green with VAST, and the finished installation has the classic look of masonry pavers. I was so impressed that I used VAST Composite Pavers for a driveway at home."

Aaron Baker, Chief Engineer, Caltrans

drainage slope it already provided. The existing deck drains were used exactly the same way. A 10" miter saw was used to cut the pavers. The area was fairly rectangular, so there were mainly just straight cuts.

VAST's patented grid system enables contractors to reduce the amount of labor required to set and align pavers. The VAST grids are laid out on the same type of base used for conventional pavers. Installers then insert VAST pavers into the grid, in any designed pattern, and the pavers are automatically spaced and aligned.

"Once the base was completed, the job went fast. Two installers left our office at 7:30 a.m. with the VAST pavers and made the 30-minute drive to Caltrans. They walked the pavers up to the third floor, laid the material, and finished in four hours. They got back in time to grab lunch before heading off to another job," Cody Biggerstaff, Senior Estimator, Claddagh Paving.

VAST Enterprises, LLC

VAST applies its patented technology to transform recycled materials into a new resource for green building: composite masonry. VAST composite products — including landscape pavers, permeable pavers for stormwater management, deck pavers and thin brick — offer an engineered alternative to molded concrete and clay brick. VAST meets the most demanding requirements for aesthetics, durability, sustainability and installation efficiency. Award-winning VAST pavers deliver rich colors, superior slip resistance and unbeatable strength at one-third the weight of concrete pavers.

Made from 95 Percent Recycled Materials

VAST helps projects earn LEED® certification easier than any other pavement. Every 5,000-square foot VAST landscape installation keeps 2,500 scrap automobile tires and 75,000 plastic containers out of U.S. landfills.



Phone: (612) 234-8958

E-mail: sales@vastpavers.com

Web: vastpavers.com



VAST Enterprises, LLC
1828 Marshall St. NE Suite 15A
Minneapolis, MN 55418